



Tracking solution for Transportation companies

With M2Fleet Server you can monitor your fleet with powerful Real Time Tracking. This will allow you to optimize the deployment, usage and maintenance strategies of your vehicles and lower your company's operating costs. Technologies like Trip and Idle Eco Driving and Fuel Reports let you make the most of your fleet resources and optimize your drivers' behavior. This will increase your customer's satisfaction and save time and money. You can also improve security on your vehicles and drivers using configurable automatic alarms that can be displayed on screen and sent via SMS and/or email.

Fleet management tools

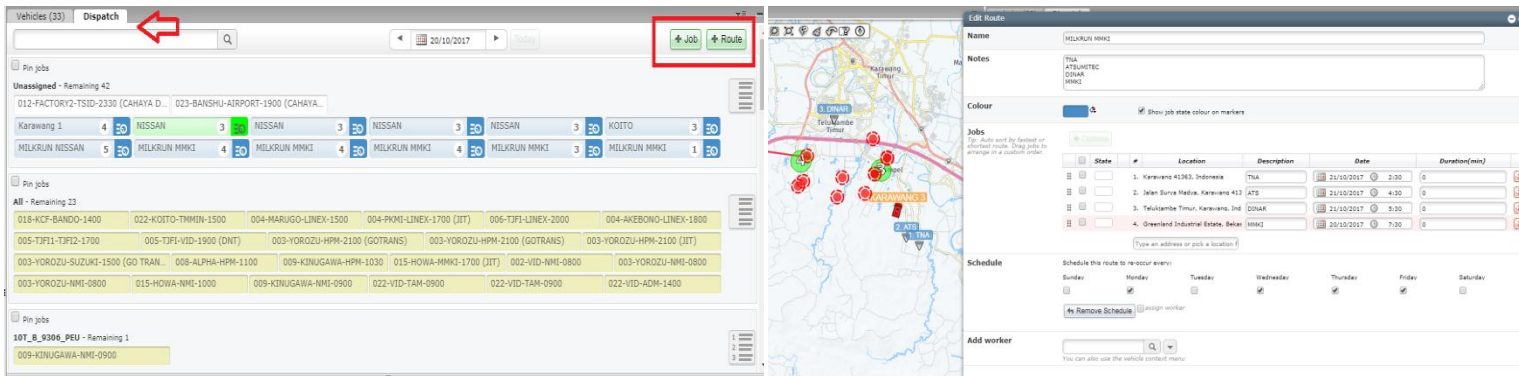
When a pick up has to be made right away it is important to assign a vehicle that is close and suitable for the job. With this tools you can perform this task easily and effectively.

Solution	Description
* Real Time Fleet View	You can directly answer customer calls about the location of transport. You can search by name, group or see the available vehicles in an specific area in the map.
* Vehicle Tags	You can group vehicles into categories to quickly find the type that can perform the job better. The distance to the pick up is displayed for all vehicles.
* Points Of Interest	You can upload your own POI to M2Fleet Server. It is also possible to generate reports based on the time that the vehicle spent in the POI location.

Dispatch your deliveries faster

End customers are expecting the shipment and there are often penalties connected with late arrival of the goods. Customers for transport companies often require historical information about shipment as well as a tool that could ease the administration of dispatching jobs.

Solution	Description
** Job Dispatch for Garmin devices	The administrator can dispatch jobs directly to the Garmin navigation devices as well as communicate with the driver using the Chat module when the vehicle is not moving.
* Mobile Dispatch	Allows the synchronization between dispatcher and the driver using a mobile interface. The driver can see his assignments in the Smartphone or tablet's browser and update his status back to the server.



Improve fuel efficiency and Drivers Behavior

There is an increasing need to reduce fuel costs. The use of your fleet and drivers in an optimal way are essential. Having the right tools to control your fleet, over factors like excessive speed, harsh driving and drivers accumulated hours will dramatically reduce fuel consumption and improve your staff satisfaction and safety.

Solution	Description
* Speeding alerts	You can have speed limits alerts based on real speed limits from OSM.
* Trip and Idle Reports	Identify idle time with the Trip and Idle report and help to avoid non-essential stops.
* Driver Working Hours	After a driver logs into the platform (using an RFID or Ibutton device), you can start a counter to know the amount of working hours for this worker. You are able to tell if the driver complies with the established policies of maximum amount of hours allowed per day.
** ECO Driving Reports	Get a driver rating based on harsh acceleration, breaking and speed.

Solution	Description
** Fuel Consumption Reports	With a fuel sensor installed in the vehicle, the report will display the date, total distance, maximum and average speed, the duration of the vehicle driving, fuel consumption and fuel efficiency, as well as the total amount of fuel used.

Eco Detailed Report

10/01/2012 - 11/01/2012

SK885939

Date	Score	Dist	Speed		Events								Time			
			Max	Avg	Break	Pts	Acc	Pts	Turn	Pts	O-spd	Pts	Trip	Idle	Pts	O-spd
Total:	85	5712 km	108.0 km/h	n/a	198	9	8	0	25	1	0	0	4.09:51:48	6.20:40:48	5	00:00:00
10/01/2012	92	220 km	95.0 km/h	52.3 km/h	0	0	2	2	1	1	0	0	04:11:59	06:38:44	5	00:00:00
10/02/2012	88	226 km	103.0 km/h	45.5 km/h	6	7	0	0	1	1	0	0	04:57:44	06:07:53	4	00:00:00
10/03/2012	90	322 km	106.0 km/h	59.1 km/h	8	6	0	0	1	1	0	0	05:26:43	04:39:33	3	00:00:00
10/04/2012	93	351 km	106.0 km/h	64.0 km/h	6	4	0	0	1	1	0	0	05:28:57	04:10:48	2	00:00:00
10/05/2012	62	25 km	85.0 km/h	20.3 km/h	2	20	0	0	1	10	0	0	01:12:47	03:23:16	8	00:00:00
10/06/2012	83	96 km	96.0 km/h	31.6 km/h	1	3	0	0	1	3	0	0	03:01:09	10:58:54	11	00:00:00
10/07/2012	92	442 km	104.0 km/h	67.6 km/h	3	2	1	1	2	1	0	0	06:32:22	07:58:29	4	00:00:00
10/08/2012	94	275 km	105.0 km/h	60.3 km/h	0	0	1	1	1	1	0	0	04:34:06	05:58:49	4	00:00:00
10/09/2012	83	136 km	94.0 km/h	35.3 km/h	1	2	0	0	1	2	0	0	03:51:42	16:32:24	13	00:00:00
10/10/2012	89	303 km	106.0 km/h	58.9 km/h	4	3	1	1	1	1	0	0	05:08:41	09:59:05	6	00:00:00
10/11/2012	95	321 km	107.0 km/h	51.6 km/h	1	1	0	0	1	1	0	0	06:12:48	05:44:09	3	00:00:00
10/12/2012	62	21 km	76.0 km/h	25.4 km/h	1	12	0	0	1	12	0	0	00:50:15	03:55:16	14	00:00:00
10/13/2012	82	82 km	92.0 km/h	29.7 km/h	2	6	0	0	1	3	0	0	02:45:16	08:35:09	9	00:00:00
10/14/2012	93	456 km	104.0 km/h	66.0 km/h	4	2	1	1	2	1	0	0	06:54:36	07:01:54	3	00:00:00

* We can use Ruptela Device or Teltonika Device

Fuel Fraud & Fuel Sensor Integration

Our Server can help you to detect possible fuel theft, loss or leakage by using a script in your Event Rules. You can setup alerts when a significant loss of fuel is detected in your vehicles. And could extend with our cover lock for preventive fuel stolen.

- Fuel Sensor Integration
- Additional Tank Cover Lock

Increase security of your drivers and vehicles

Problems with stolen merchandise and hijacked vehicles are increasing for many transportation companies. Profit margins can quickly be turned into big losses if a large truck or shipment is stolen. With these tools you will be able to improve your vehicle's security and driver's safety conditions as you have a complete overview of all the events taking place in a designated route or area.

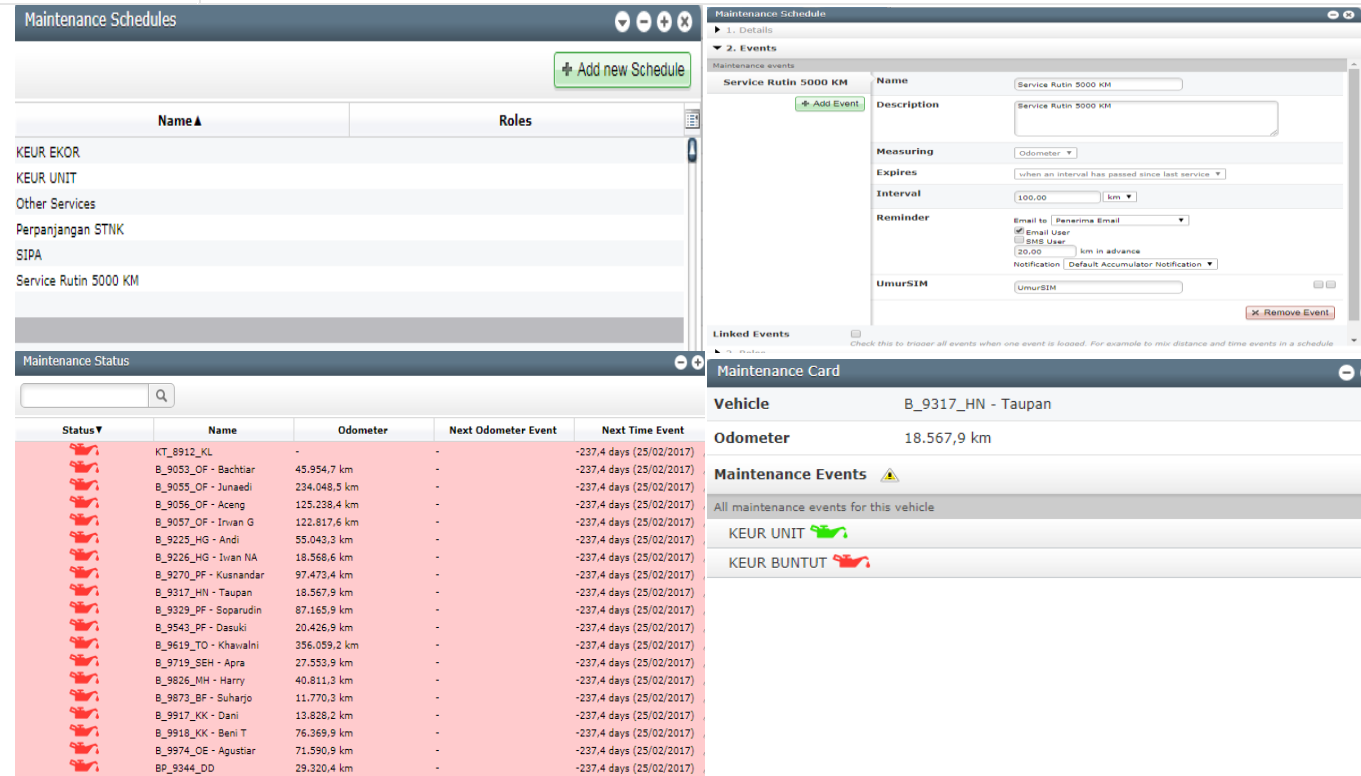
Solution	Description
* Real Time Positioning	You can follow your vehicles and assets on a map in real time. Up-to-date vehicle locations and status information keeps you in control.
* SOS alarms	The driver can generate SOS alarms from his device which are displayed in the user interface in real time
* Geofences	You can setup a perimeter in any area in the map according to your specific needs. Polygonal and circle areas are supported, as well as keeping them tagged and organized into categories. You can decide if this geofences will be visible in the map and use colors to differentiate each of them.

Solution	Description
* Route Geofences	To ensure that a vehicle doesn't leave a predetermined route the system can make use of Route geofences.
* SMS / Email notifications	All mentioned features can be setup to be displayed in a web interface or sent by SMS or Email to a user or a group of users.
Display driven distance on each country	When your fleet has to travel across borders in different countries (and to apply the right TAX policies in your company), you can make use of the IFTA Europe report to count the distance driven in each country.

Extend your fleet lifetime (Preventive Maintenance)

Is important to know when maintenance has to be performed for each vehicle to keep your fleet in an optimal condition with vehicles available at any moment.

Solution	Description
* Vehicle Maintenance	Keep track of when it is time to perform a service of each vehicle in the fleet. Extend the lifetime of the fleet due to better control of the service intervals.



The screenshot displays the M2 FLEET software interface, divided into several sections:

- Maintenance Schedules:** A list of scheduled services including KEUR EKOR, KEUR UNIT, Other Services, Perpanjangan STNK, SIPA, and Service Rutin 5000 KM. An "Add new Schedule" button is visible.
- Maintenance Schedule Details:** A detailed view of a "Service Rutin 5000 KM" event, showing fields for Name, Description, Measuring (Odometer), Expires (When an interval has passed since last service), Interval (100.00 km), Reminder (Email to Penerima Email, Email User, SMS User, 30.00 km in advance, Notification: Default Accumulator Notification), and UmurSIM (UmurSIM). A "Remove Event" button is at the bottom.
- Maintenance Status:** A table listing the status of various vehicles. The table has columns for Status, Name, Odometer, Next Odometer Event, and Next Time Event. All vehicles listed have a status of "Maintenance Due" (indicated by a red truck icon) and a "Next Time Event" of "-237,4 days (25/02/2017)".
- Maintenance Card:** A card for vehicle "B_9317_HN - Taupan" showing an Odometer of 18.567,9 km. It lists "Maintenance Events" for "KEUR UNIT" (green truck icon) and "KEUR BUNTUT" (red truck icon).

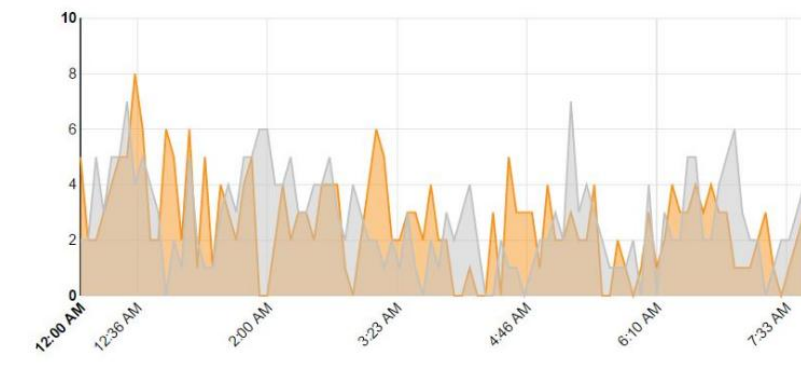
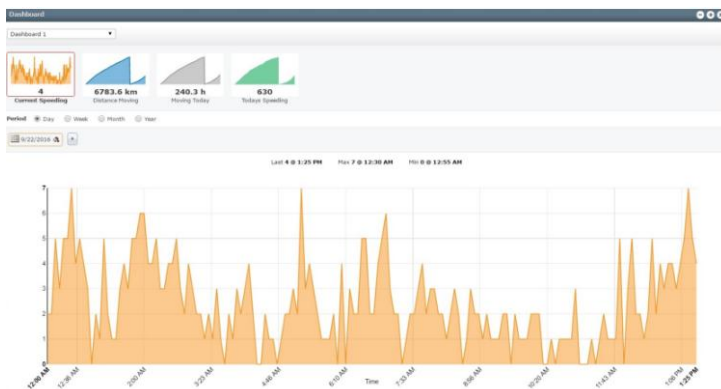
Status	Name	Odometer	Next Odometer Event	Next Time Event
	KT_8912_KL	-	-	-237,4 days (25/02/2017)
	B_9053_OF - Bachtiar	45.954,7 km	-	-237,4 days (25/02/2017)
	B_9055_OF - Junaedi	234.048,5 km	-	-237,4 days (25/02/2017)
	B_9056_OF - Aceng	125.238,4 km	-	-237,4 days (25/02/2017)
	B_9057_OF - Invan G	122.817,6 km	-	-237,4 days (25/02/2017)
	B_9225_HG - Andi	55.043,3 km	-	-237,4 days (25/02/2017)
	B_9226_HG - Invan NA	18.568,6 km	-	-237,4 days (25/02/2017)
	B_9270_PF - Kusnandar	97.473,4 km	-	-237,4 days (25/02/2017)
	B_9317_HN - Taupan	18.567,9 km	-	-237,4 days (25/02/2017)
	B_9329_PF - Soparudin	87.165,9 km	-	-237,4 days (25/02/2017)
	B_9543_PF - Dasuki	20.426,9 km	-	-237,4 days (25/02/2017)
	B_9619_TO - Khawalni	356.059,2 km	-	-237,4 days (25/02/2017)
	B_9719_SEH - Apra	27.553,9 km	-	-237,4 days (25/02/2017)
	B_9826_MH - Harry	40.811,3 km	-	-237,4 days (25/02/2017)
	B_9873_BF - Suharjo	11.770,3 km	-	-237,4 days (25/02/2017)
	B_9917_KK - Dani	13.828,2 km	-	-237,4 days (25/02/2017)
	B_9918_KK - Beni T	76.269,9 km	-	-237,4 days (25/02/2017)
	B_9974_OE - Agustiar	71.590,9 km	-	-237,4 days (25/02/2017)
	BP_9344_OD	29.320,4 km	-	-237,4 days (25/02/2017)

KPI Dashboard

A dashboard is a great tool to give a visual summary of your fleet’s activity. The Mobile Dashboard plugin aggregates data based on your event rules and presents the information with graphs to give you a better understanding of the data.

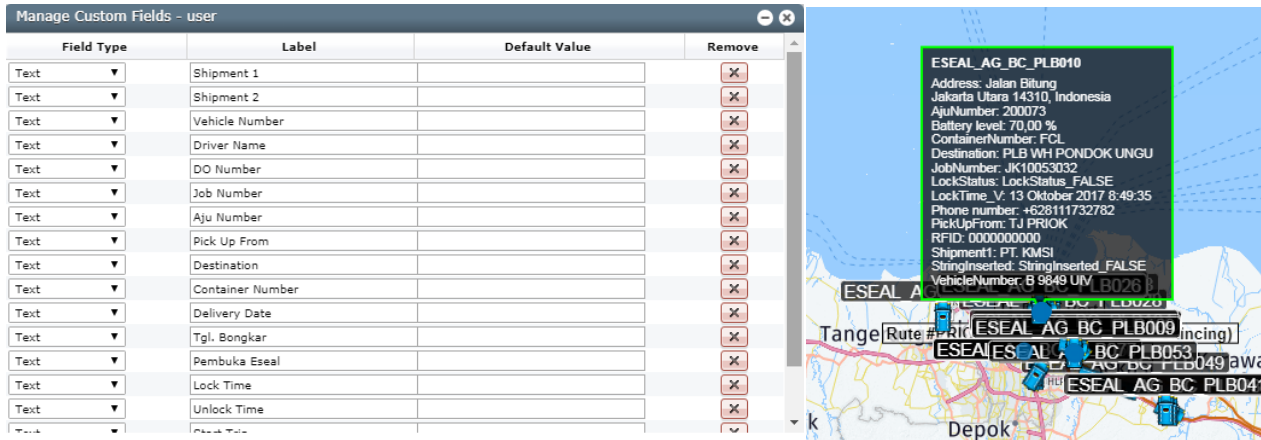
A Dashboard consists of one or multiple Dashboard Items. Each Dashboard Item is linked to an Event Rule that you are interested in. You can decide if you want to show the number of active events, the duration or the total distance when the event rule was active and much more.

Solution	Description
Dashboard	The Dashboard plugin provides a real time overview of your VehicleTracker application. You can now visualize the number of vehicles idling, distance traveled or any other events triggered and their duration. The real time interface provides you with a better overall control of your fleet and easier management of fleet operations. Dashboards are available in the desktop interface and our mobile application, which enables you to be constantly updated, even when you are on the go!



Customization

Our Platform could be extend feature and reporting by adding and manage custom field and variable for reporting purpose, event rule and others need.



The screenshot displays the 'Manage Custom Fields - user' interface. On the left, a table lists various custom fields with their types, labels, default values, and removal options. On the right, a map view shows several data points overlaid on a geographical area, each labeled with a unique identifier like 'ESEAL_AG_BC_PLB010'.

Field Type	Label	Default Value	Remove
Text	Shipment 1		X
Text	Shipment 2		X
Text	Vehicle Number		X
Text	Driver Name		X
Text	DO Number		X
Text	Job Number		X
Text	Aju Number		X
Text	Pick Up From		X
Text	Destination		X
Text	Container Number		X
Text	Delivery Date		X
Text	Tgl. Bongkar		X
Text	Pembuka Eseal		X
Text	Lock Time		X
Text	Unlock Time		X

The map view shows a detailed data popup for 'ESEAL_AG_BC_PLB010' with the following information:

- Address: Jalan Bitung Jakarta Utara 14310, Indonesia
- AjuNumber: 200073
- Battery level: 70,00 %
- ContainerNumber: FCL
- Destination: PLB WH PONDOK UNGU
- JobNumber: JK10053032
- LockStatus: LockStatus FALSE
- LockTime_V: 13 Oktober 2017 8:49:35
- Phone number: +628111732782
- PickUpFrom: TJ PRIOK
- RFID: 0000000000
- ShipmentId: PT. KMSI
- StringInserted: StringInserted_FALSE
- VehicleNumber: B 9849 UM

Additional Custom Fields for reporting purpose, and or displayed in map.

SUCCESS STORIES



PT. GUDANG GARAM Tbk



SCHENKER



PT. DARA PRASTA CEMERLANG
A Global Directory of Shipping and Logistics Providers



Unilever



NIPPON EXPRESS
Global Logistics Provider



KAMADJAJA LOGISTICS